

Helping fish, wildlife & future generations

- 19 restoration projects to improve **water quality** and **wildlife** habitat.
- Removed 11 barriers that blocked the movements of **native fish** to their spawning & rearing habitats.
- Planted over 70,000 native trees & shrubs to improve stream habitat.

Learning & involvement

- 232 people participated in **learning** events on topics including urban stream health, enhancement of oak & prairie habitat, watershed restoration economics, farming & conservation along large rivers, and local foods.
- Involved 36 volunteers in plant establishment, 63 volunteers in research, 29 volunteers in committee work, and 34 volunteers in education and outreach. *More than 280 total **volunteers** for over 2,700 hours of **service!***

Bridging urban & rural communities

- Leading a collaborative effort **bringing urban and rural sectors together** to improve Amazon Creek.
- Broadening our **community outreach** to the Willamette River for restoration project development and invasive species removal.

Science & stewardship

- Assessed habitat quality by collecting water temperature data at 27 sites and conducting habitat monitoring in 3 streams.
- **Prioritizing** potential projects and determine project **effectiveness**.
- 43 volunteers helped us tag and track the movements of **cutthroat trout** in the watershed this year.



“A waterway through downtown is a community asset. If it goes ignored, no one will want to be there. We need to make Amazon Creek an amenity to all.”
- Rusty, Rexius, local business owner



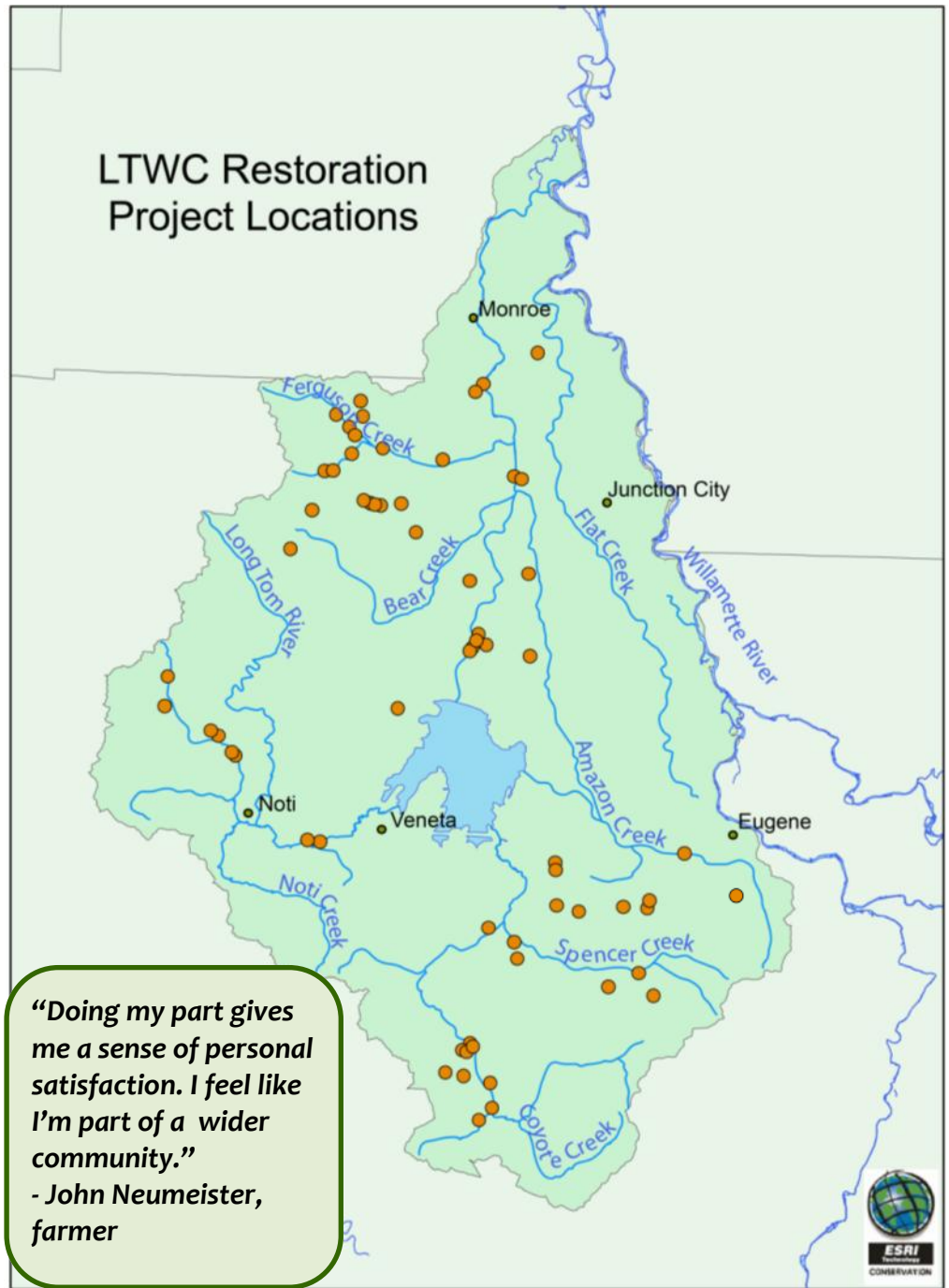
The Long Tom Watershed Council serves to improve water quality and watershed condition in the Long Tom River basin through education, coordination, consultation, and cooperation among all interests, using the collective wisdom and voluntary action of our community members.

Contacts: • Max Nielsen-Pincus, Board Chair • Dana Dedrick, Watershed Coordinator/Executive Director
• (541) 338-7055 • www.longtom.org (check out our new website!)

Restoration Project Landowners

**People who have done
projects on their land
- Thank you!**

- Kristen Anderson (2007)
- Paul Atkinson (2008)
- Matt & Mandy Barrows (2012)
- Rick & Carol Barrows (2012)
- Al & Wanda Bartlett (2005)
- Will & Kathy Bondioli (2002)
- Boy Scouts, Oregon Trail Council (2011)
- Jim & Maria Bradshaw (2012)
- Ted & Linda Brown (2012)
- Bureau of Land Management (2010, 2011)
- Ryan Collay (2001)
- Davis Commercial Properties (2012)
- John & Christine Deck (2010)
- Ron & Pam Detering (2001)
- Paula & Curtis Erickson (2009)
- City of Eugene (2001, 2005, 2007, 2009)
- Mike & Cindy Gates (2012)
- Scott Gibson (2007, 2008)
- Jack Gray (2006, 2008)
- Trey & Tammie Hagen (2011, 2012)
- Kent Hansen (2008)
- Glen & Genie Harden (2008)
- Dave & Marta Heidt (2007, 2010)
- Gary & Jo Holzbauer (2003)
- Tom Hunton (2005)
- Rick Huhtanen & Nancy Scholler (2003)
- Derek & Diane Jaros (2007)
- Art & Anita Johnson (2000, 2002, 2003, 2005, 2010)
- Val & Ken Kime (2011)
- Kurt Koehler (2011)
- Lane County (2001)



- Rick & Patti Little (2003)
- Deborah & Alan Mattson (2005, 2007, 2011)
- Joe McFadden (2008)
- Cary Moffett (2005)
- Rick Movsky (2002)
- Ron & Janice Murphy (2008)
- John & Gwen Neumeister (2003)
- Hal Noble (2005)
- Kathy Noble (2005)
- Dave & Linda Schudel (2012)
- Steve Sertic (2004)
- Heather Sogge (2010)
- Tad Sogge (2010)
- Linda Stork (2006)
- Stroda Family (2007, 2008, 2011)
- Molly Templeton (2002)
- Andy & Maryrae Thomson (2003, 2011)
- Dave & Suzanne Turner (2005)
- U.S. Army Corps of Engineers (2012)
- Dave & Isabel Watkins (2011)
- Mark Westphal (2002)

Donors — Thank you for supporting our Inaugural Fundraising Campaign!



Individual Gifts

“I think so highly of what the watershed council does. The fact that you listen to your partners and members says a lot.”

Lead Gifts (\$1,000 +)

The Hunton Family, Art & Anita Johnson

Major Gifts (\$250 +)

Scot & Francine Berryman, Mike Brinkley, Keli M. Osborn, Jim & Chris Pendergrass, Charles Ruff, Deborah Saunders Evans, Court Smith

Supporters (up to \$250)

In memory of Norma V. Allen, Rolf & Barbara Anderson, Tom Bauman & Lindsay Reaves, Philip Bayles, Scot & Francine Berryman, Brandon Bertilson, Ann Bettman & Dan Dingield, Peg Boulay & Bruce Newhouse, Lee & Margaret Boutell, Martin & Ellen Burke, Bruce Campbell, Linda Carnine, Kim Carson, Mardel Chinburg, Robin & Dave Chinburg, Steve Cole—Cole Resource Management, Rich & Jenny Coleman, Warren Colvin & Linda Bovard, Dr. Doug Evans—Feline Thyroid Clinic, Jenna Garmon, Niall & Ali Gartlan, Ron & Karen Gilson, Steve & Carol Girard, Steve & Susan Gordon, Roger & Karen Hamilton, Carl Harrison, Cliff & Rod Herbert, Gary & Jo Holzbauer, Jill Hoyenga, Jason & Kimmie Hunton, Ric Ingham, Sue Kacskos & Dan Schuck, Beth Krisko, Kristen Larson, Laughing Stock Farm, Tom Lively & Megas MacDonald, Rich Margerum, Lydia & Joseph McKinney, Sam & Zola Miller, David Moon, John Moriarty & Kit Kirkpatrick, Nielsen-Pincus Family, Ernie & Wanda Niemi, Tenold & Karin Peterson, Adam Novick, Nancy Pierce, David Ponder, Michael Reidy, Jared Rubin & Penny Joy Salus, Steve Sertic, Chad Stroda, Shirlee Taylor, Andy & Maryrae Thomson, Dave & Suzanne TurnerTherese Walch, Mary Ellen West, “In honor of the work you do.”



Business Gifts



\$250 or more

Eugene Water & Electric Board, Lochmead Farms, Ninkasi Brewing Co., Organically Grown Co., Oregon Country Fair, Pacific Ag, Inc., Reerslev Farms, Weyerhaeuser Co.

up to \$250

Bradshaw Vineyards, Eugene Skin Divers Supply, Global Impact (volunteer program through Symantec Corp), Karma’s Forest Wholesale Nursery



Board of Directors

2011-12

Amazon

Max Nielsen-Pincus,
Chair

David Ponder

Therese Walch

Lower Long Tom

Jason Hunton

Jim Pendergrass,
Past Chair

Chad Stroda,
Vice Chair

Upper Long Tom

Sue Kacskos,
Co-Treasurer

Lindsay Reaves

Charles Ruff

At Large

Mike Brinkley,
Co-Treasurer

Steve Cole

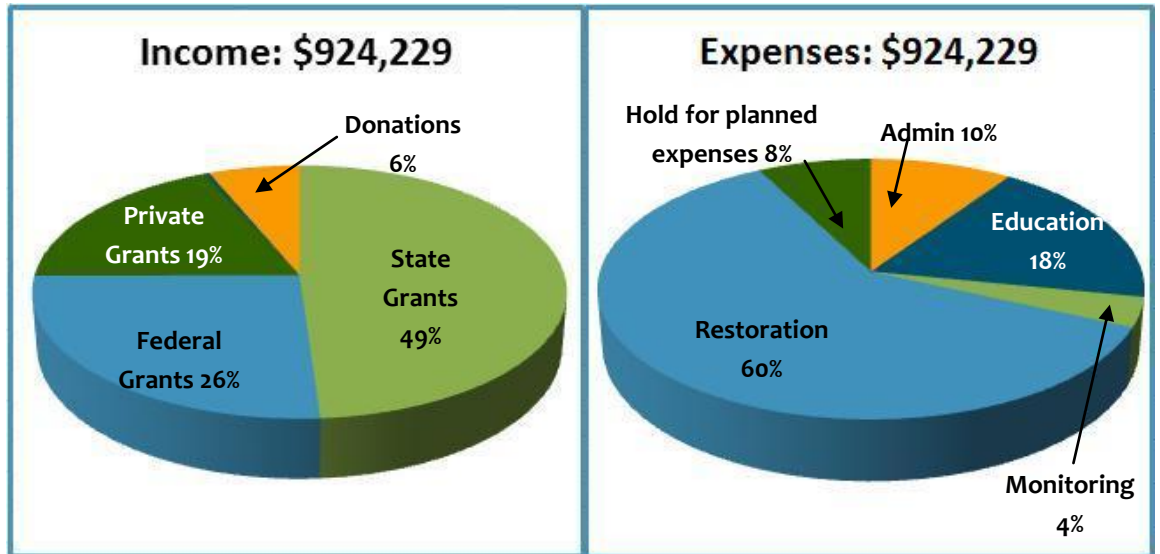
Beth Krisko

Deborah Saunders
Evans, Vice Chair

David Turner,
Secretary

Funding & Support

July 1, 2011—June 30, 2012



- Individual donations show support and help us win grants for this community.
- Approximately 90% of LTWC’s grant funds are spent locally in Lane County.
 - Every hour of staff time leverages at least an hour of volunteer time!

Grant & Project Partners

Private

Bonneville Environmental Foundation, Environmental Systems Research Institute (Esri), McKenzie River Trust, Meyer Memorial Trust, National Fish & Wildlife Foundation, Network of Oregon Watershed Councils, Oregon RFID fish tracking equipment

Public

City of Eugene, City of Veneta, Oregon Dept. of Environmental Quality, Oregon Dept. of Fish & Wildlife, Oregon Watershed Enhancement Board, U.S. Army Corps of Engineers, U.S. Bureau of Land Management, U.S. Environmental Protection Agency, U.S. Fish & Wildlife Service

The Council: Formed in 1997, the Long Tom Watershed Council is a 501(c)3 non-profit citizens’ group comprised of people from all perspectives, and guided by a diverse Board of Directors. The Council has a successful track record of addressing local land and water issues in a proactive and positive manner.

Staff: Dana Dedrick, Rob Hoshaw, Jed Kaul, Katie MacKendrick, Jason Schmidt, and Amanda Wilson