



A snapshot of local impact



Action through Understanding since 1998

Willamette River ♦ Long Tom River ♦ Amazon Creek

Veneta ♦ Crow ♦ Noti

Monroe ♦ Cheshire ♦ Junction City ♦ Eugene

The Long Tom Watershed Council serves to improve water quality and watershed condition in the Long Tom River basin through education, coordination, consultation, and cooperation among all interests, using the collective wisdom and voluntary action of our community members.

Model Watershed Program in rural areas

Helping fish, wildlife & future generations

LTWC was chosen for our community support, science-based prioritization and monitoring, and **10 years of results** working with private landowners to achieve habitat restoration. These are the same results that led to LTWC winning the **2009 International Award for the Science and Practice of Ecology and Society**. After 4 years in the Model WS program we are on track on most of our ambitious goals in 3 rural watersheds. Projects include opening streams so native trout can migrate once again, planting for shade and habitat, addressing erosion and water quality, and restoring productive prairies, wetlands, and oak savannas. This remarkable progress helped Meyer's Willamette Team win the prestigious **2012 Thiess International Riverprize**.



Amazon Creek

Bridging urban & rural communities

After years of planning, community discussion, and careful savings, we launched a **Pesticide Stewardship Program**, the only one in Oregon to include an urban area (Eugene), and one upstream of valuable farmland! An early sign of success is a commercial business owner paying to transform his landscape for clean water using our technical expertise—a Trout Friendly landscape! Inspired by that voluntary private investment, the City of Eugene is giving LTWC capital funds to match other business owners' investment. This **curbs stormwater pollution 20-50 years ahead of time**—long before it would have been caught by redevelopment code.



Willamette River

Science & stewardship

We are using our **expertise in landowner outreach and habitat restoration** to partner with the land trusts and others in talking with river landowners, removing invasives, and restoring habitat function and quality along the mainstem Willamette River. A network of conservation action and protection will **meet the needs of both people and the river, together**.



Leading community-based conservation. LTWC has led the development and implementation of over 60 restoration projects and multiple programs since 1998.

Helping property owners directly. Over 90% of the Long Tom Watershed, and the Willamette River basin, is private land. We've become experts in helping people find solutions for fish, wildlife and water quality that match their values and business needs.

Win-win scenarios. LTWC matches the funding priorities of foundations and government grantors with local community needs and conservation priorities.

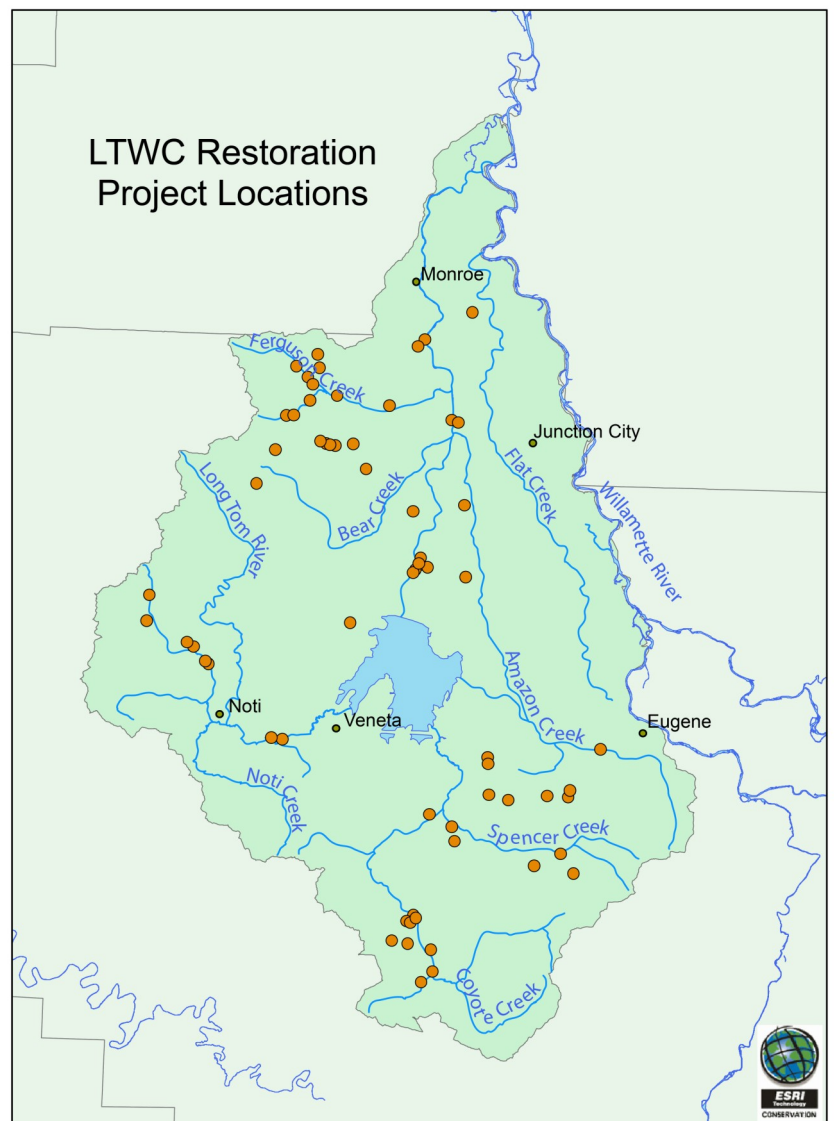
Investing in our local economy. Over 85% of LTWC revenue is spent on local vendors, with a 2.6 multiplier effect on job creation in Lane County.

One year in numbers.

- * 19 habitat restoration projects
- * 11 fish migration barriers removed
- * 70,000 native trees & shrubs planted
- * 232 people increasing their knowledge
- * 280 people volunteering
- * 27 data sites for stream health
- * 1 hour of volunteer time matches every hour of staff time - we are committed to citizen engagement!

"Knowing that I'm doing my part gives me a sense of personal satisfaction. I feel like I'm part of a wider community."

- John Neumeister, farmer & restoration project landowner



Board of Directors

2011-12

Amazon

Max Nielsen-Pincus,
Chair

David Ponder

Therese Walch

Lower Long Tom

Jason Hunton

Jim Pendergrass,
Past Chair

Chad Stroda,
Vice Chair

Upper Long Tom

Sue Kacsos,
Co-Treasurer

Lindsay Reaves

Charles Ruff

At Large

Mike Brinkley,
Co-Treasurer

Steve Cole

Beth Krisko

Deborah Saunders
Evans, Vice Chair

David Turner,
Secretary

Executive Director

Dana Dedrick

541-338-7055

Grant & Project Partners

Private

Bonneville Environmental Foundation, Environmental Systems Research Institute (Esri), McKenzie River Trust, Meyer Memorial Trust, National Fish & Wildlife Foundation, Network of Oregon Watershed Councils, Oregon RFID fish tracking equipment

Public

City of Eugene, City of Veneta, Oregon Dept. of Environmental Quality, Oregon Dept. of Fish & Wildlife, Oregon Watershed Enhancement Board, U.S. Army Corps of Engineers, U.S. Bureau of Land Management, U.S. Environmental Protection Agency, U.S. Fish & Wildlife Service

Landowners & Volunteers

61 private landowners and 280 Volunteers!

Individual & Business Sponsors

66 individual gifts & 12 business sponsorships supported our Inaugural Fundraising Year!



“I think so highly of what the watershed council does. The fact that you listen to your partners and members says a lot.”

- Brenda Cervantes, volunteer