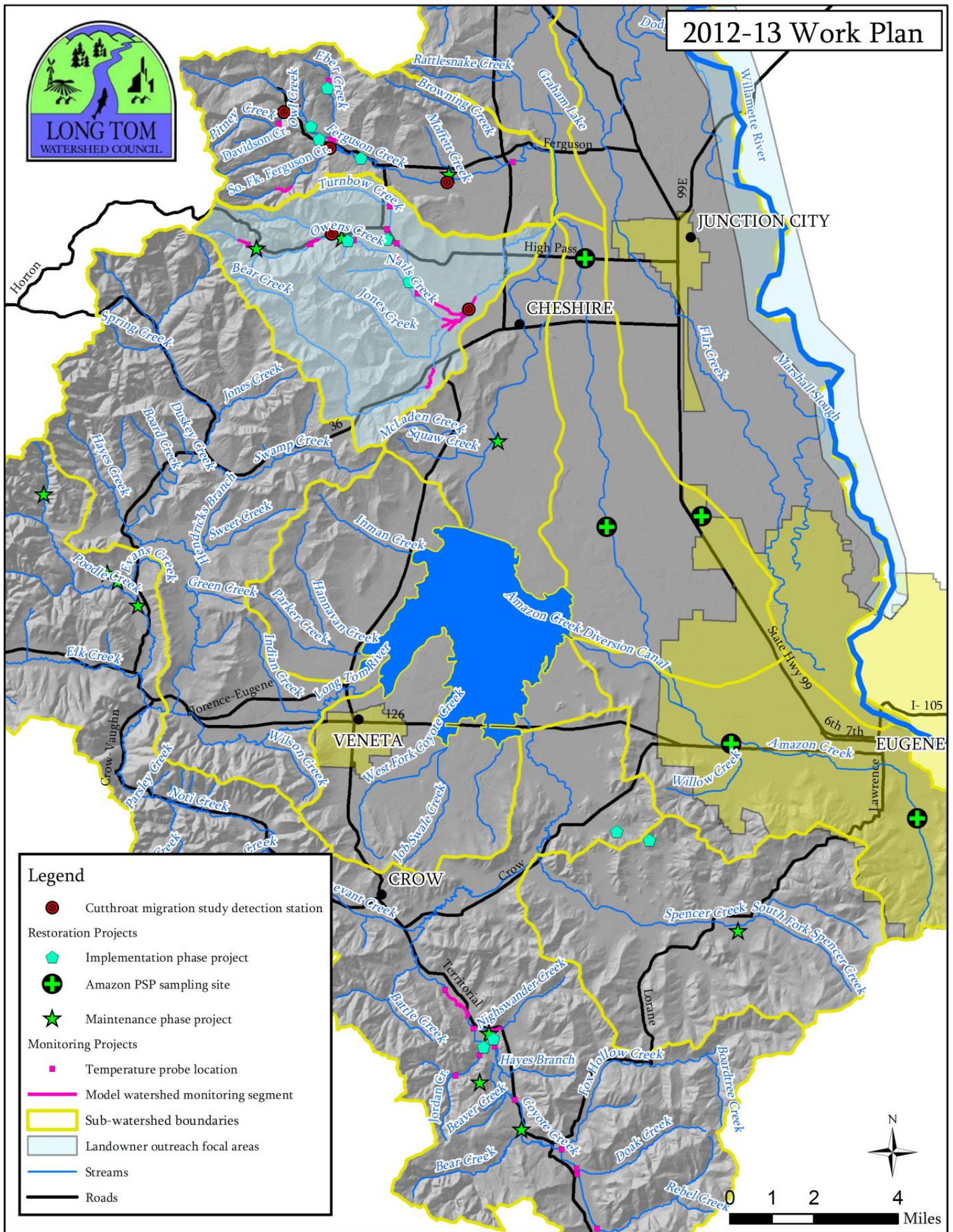
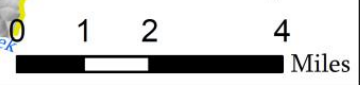


2012-13 Work Plan



Legend

- Cutthroat migration study detection station
- Restoration Projects**
- ◆ Implementation phase project
- + Amazon PSP sampling site
- ★ Maintenance phase project
- Monitoring Projects**
- Temperature probe location
- Model watershed monitoring segment
- Sub-watershed boundaries
- Landowner outreach focal areas
- Streams
- Roads



Implementation Phase Projects

05-08—Coyote Creek Fish Passage & Jordan Creek Riparian Restoration—Mattson

09-03—Owens Creek Fish Passage and Turnbow Creek Riparian Enhancement—Deck

10-04—Owens Creek Fish Passage, Instream, and Riparian Enhancement—Barrows

11-01—Kime Oak Savanna & Prairie Restoration—Kime

11-02—Ferguson & Eber Creek Riparian Enhancement; Ferguson Creek Log Placement—Thomson

11-03—Ferguson Creek Riparian, Fish Passage and Instream Enhancement—Hagen

11-04—Jordan Creek Fish Passage & Off-Channel Irrigation—Mattson

11-06—Nighswander/Coyote Confluence Riparian Enhancement—Watkins

11-07—Ferguson Creek Fish Passage, Instream, and Riparian Enhancement—Bradshaw

Maintenance Phase Projects

02-02—Poodle Creek Restoration: Phase 1—Allison, Wesphal, Gray, Little, Bondioli

03-01—Poodle Creek Fencing/Off-channel Watering Phase 2—Little

03-03—Ferguson Creek Wood & Riparian Enhancement—Holzbauer

05-02—Bear Creek Fish Passage & Stream Enhancement—Noble

05-03—Owens Creek Fish Passage & Riparian Enhancement—Turner

05-04—Ferguson Creek Riparian & Stream Enhancement—Bartlett/Moffett

05-07—Historic Coyote Creek Riparian Enhancement—Johnson

05-09—Hunton Riparian & Wetland Enhancement—Hunton

07-01—Upper Poodle Creek Fish Passage & Riparian Enhancement—Heidt

07-07—Murphy Wet Prairie & Stream Restoration—Murphy

07-08—Wintergreen Farm Pond Enhancement & Invasive Species Control—Gray

07-09—Top Lake Riparian Enhancement—Mattson

09-07—Coyote Creek Upland Prairie & Oak Savanna-Woodland Restoration—Johnson

Monitoring to be conducted

27 temperature probes will be installed within the Model Sub-watersheds for continuous summer monitoring.

7.5 miles of model watershed project effectiveness monitoring

Amazon Creek water sampling at 5 locations

Cutthroat trout migration tracking at 5 stations

Project-specific effectiveness monitoring at 3 sites (not depicted on map)